

HENRY NORRIS & ASSOCIATES

ARCHITECTURE & ENVIRONMENTAL DESIGN

30 N. PALAFOX
PENSACOLA, FL
32502
(850)432-6011
FAX 435-9001

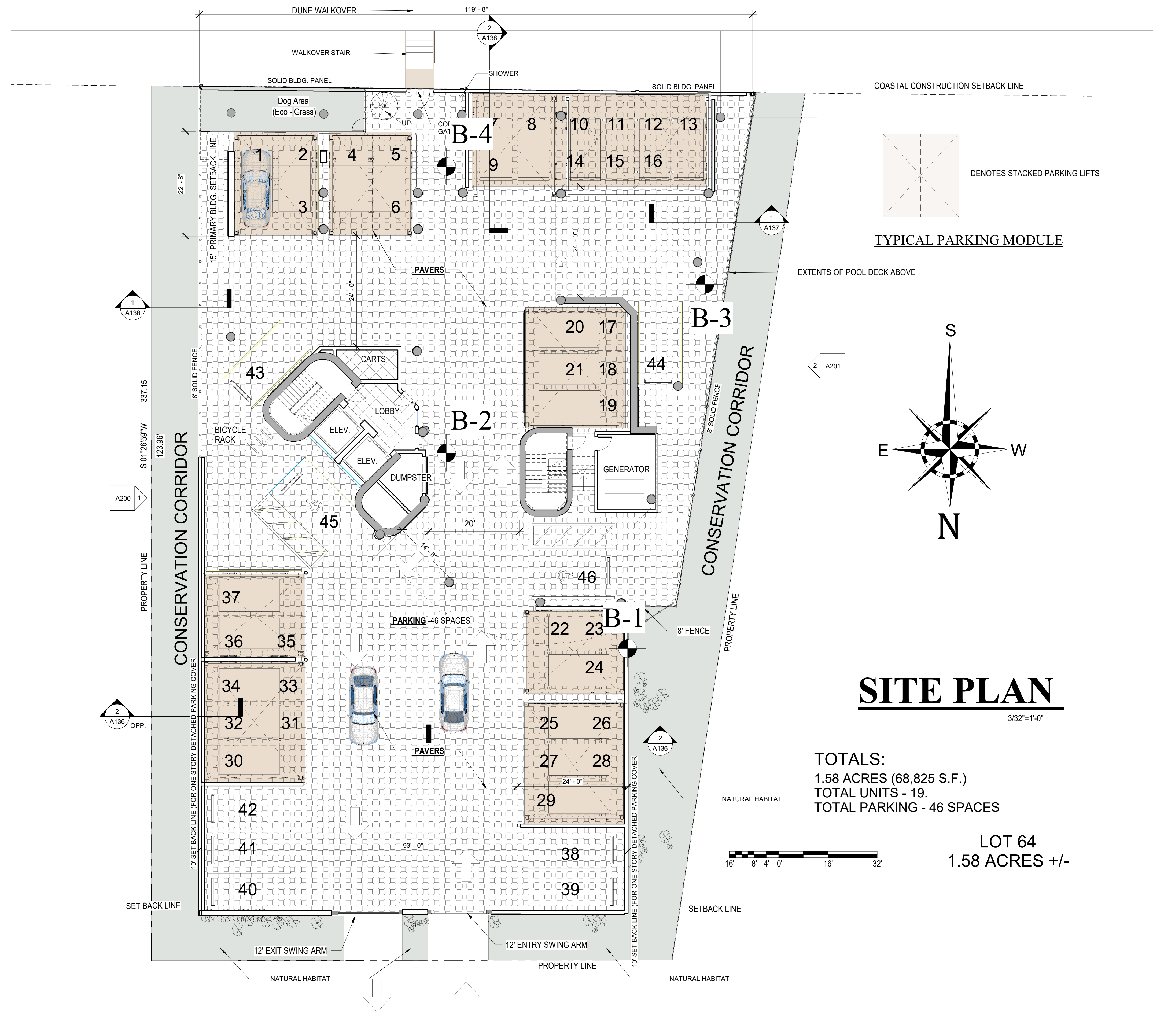
LAVISTA
PERDIDO KEY, FLORIDA

JOB #: Project Number
CAD:
CHECKED: HN
DATE: 7/27/24

REVISIONS:
7/13/22
ADJUSTED SETBACKS FOR DETACHED PARKING COVER
7/27/22
ADJUSTED PARKING LAYOUT, & SITE APPURTANCES
2/26/24
ADJUSTED PARKING LAYOUT, & STRUCTURAL COLS. & WALLS

SHEET TITLE:
OVERALL SITE PLAN

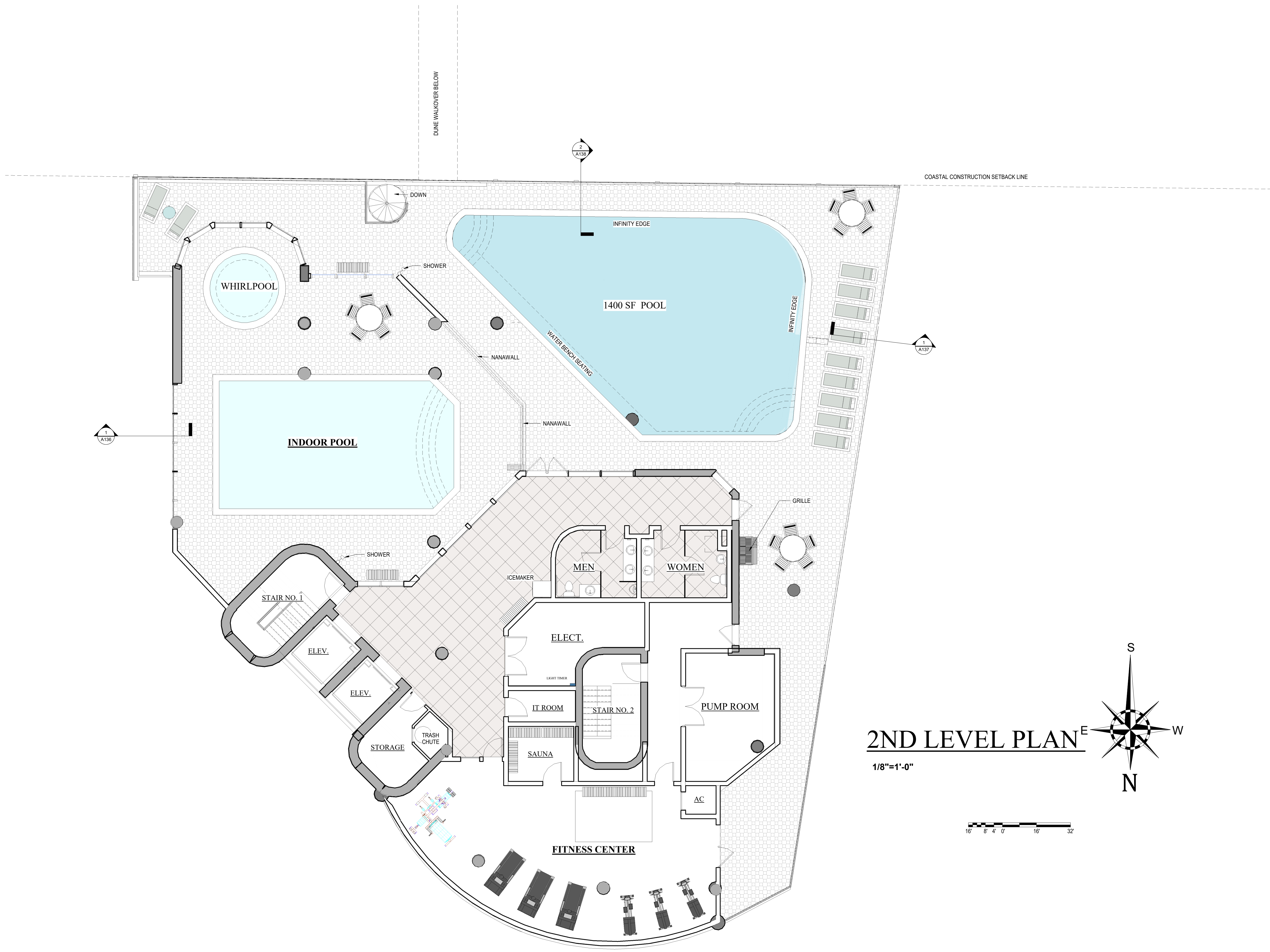
A001



SITE PLAN

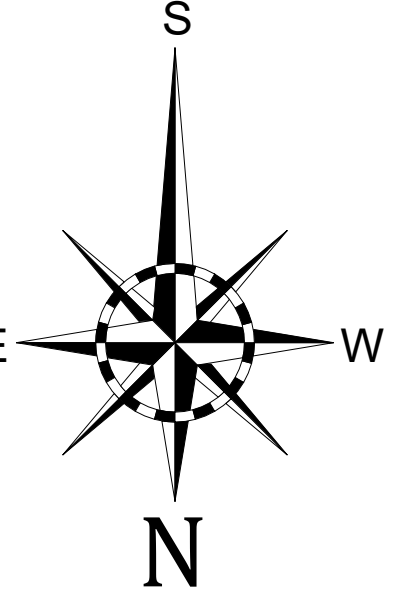
TOTALS:
1.58 ACRES (68,825 S.F.)
TOTAL UNITS - 19
TOTAL PARKING - 46 SPACES

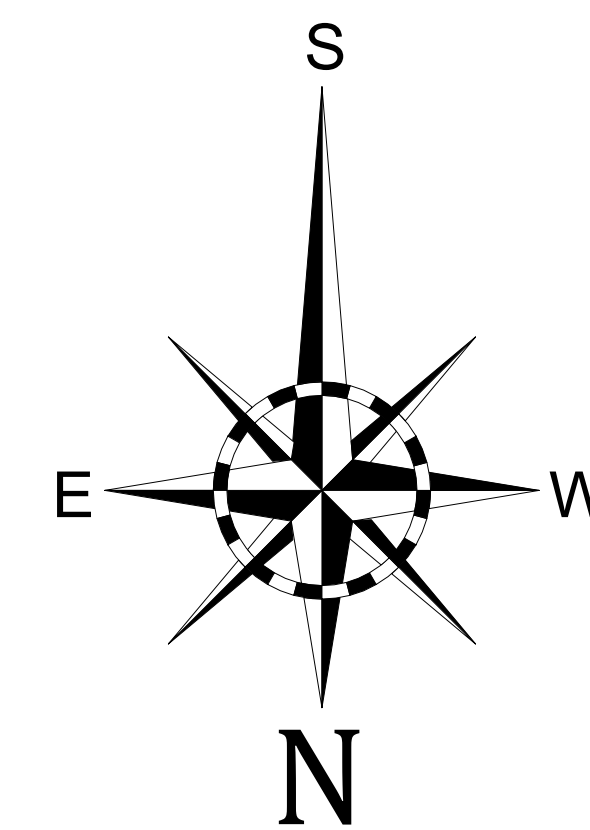
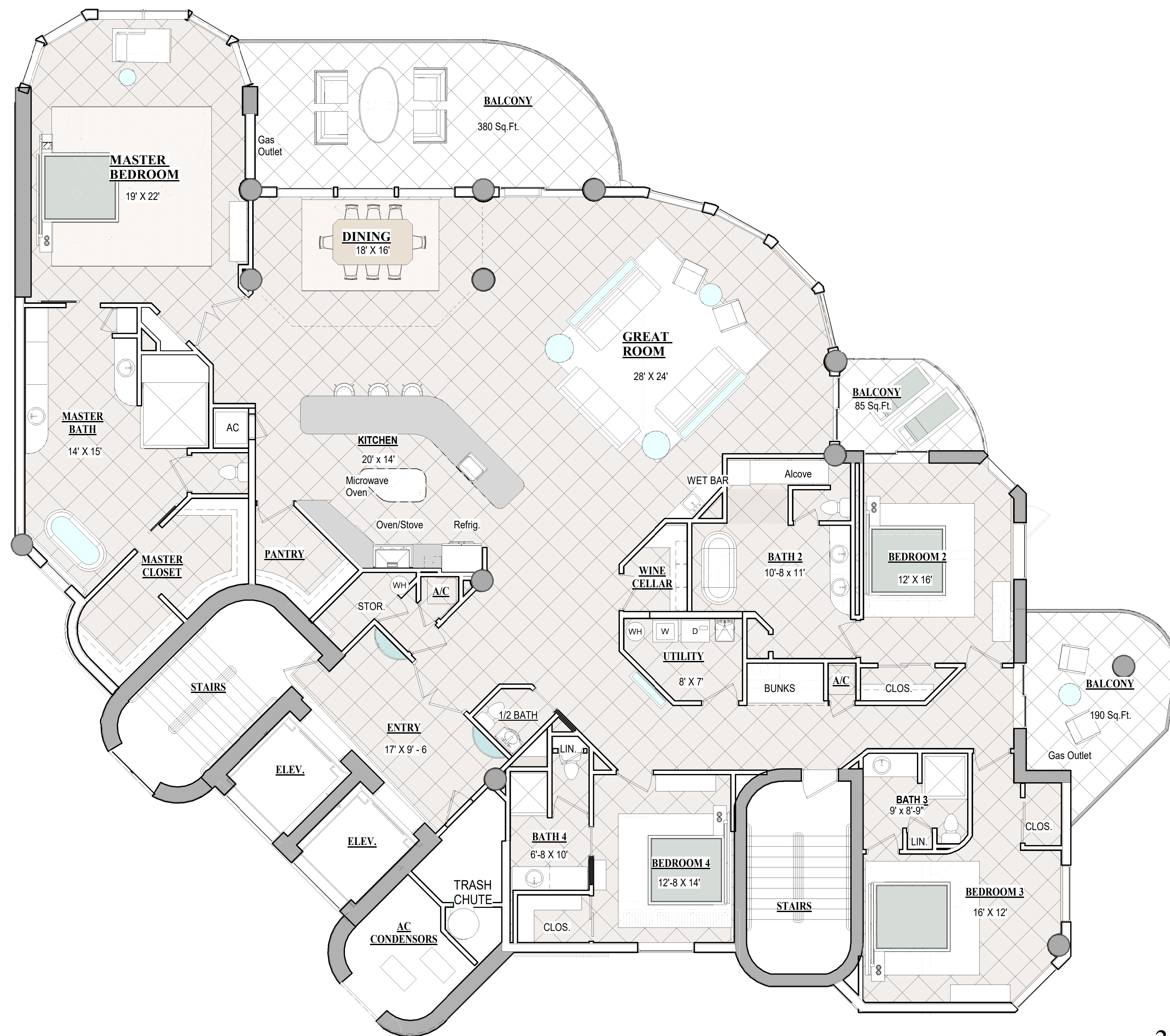
LOT 64
1.58 ACRES +/-



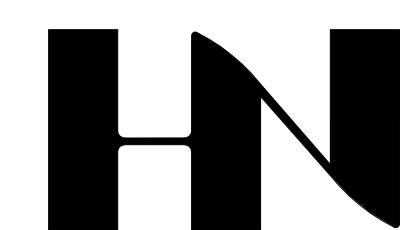
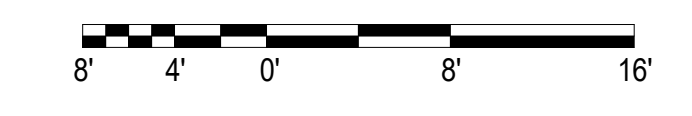
2ND LEVEL PLAN

1/8"=1'-0"





3RD - 21ST FLOOR PLAN



**HENRY NORRIS
&
ASSOCIATES**

**ARCHITECTURE
&
ENVIRONMENTAL
DESIGN**

30 N. PALAFOX
PENSACOLA, FL
32502
(850)432-6011
FAX 435-9001

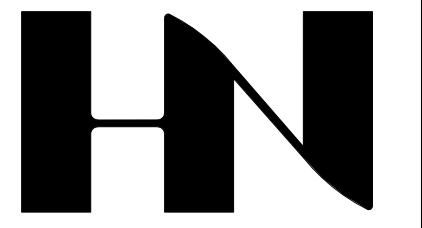
LAVISTA
PERDIDO KEY, FLORIDA

JOB #: Project Number
CAD:
CHECKED: HN
DATE: 7/27/24

REVISIONS:

SHEET TITLE:
3RD THRU 21ST BLDG.
PLAN

A003



HENRY NORRIS & ASSOCIATES

ARCHITECTURE & ENVIRONMENTAL DESIGN

30 N. PALAFOX
PENSACOLA, FL
32502
(850)432-6011
FAX 435-9001

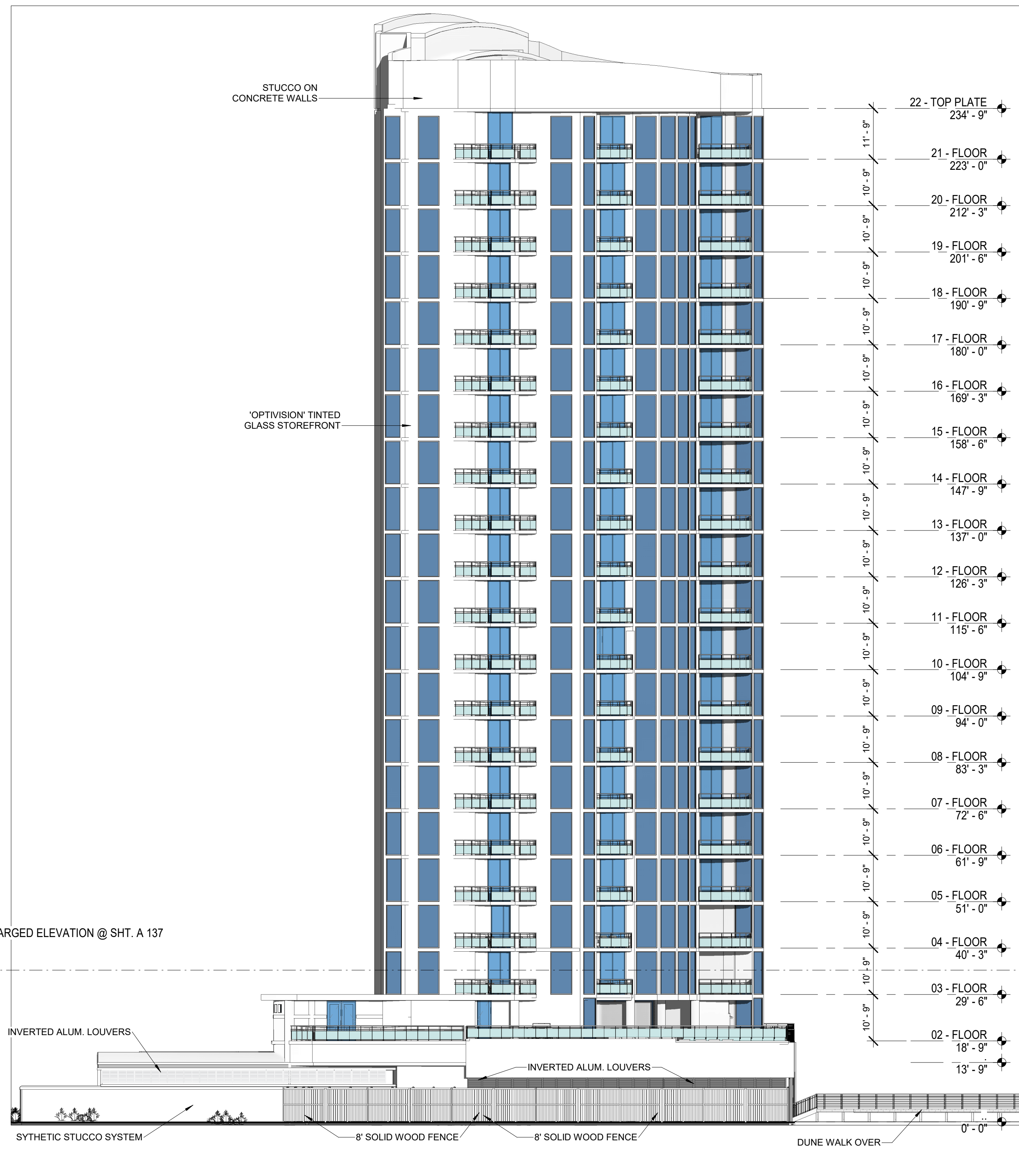
LAVISTA
PERDIDO KEY, FLORIDA

JOB #: Project Number
CAD:
CHECKED: HN
DATE: 7/27/24

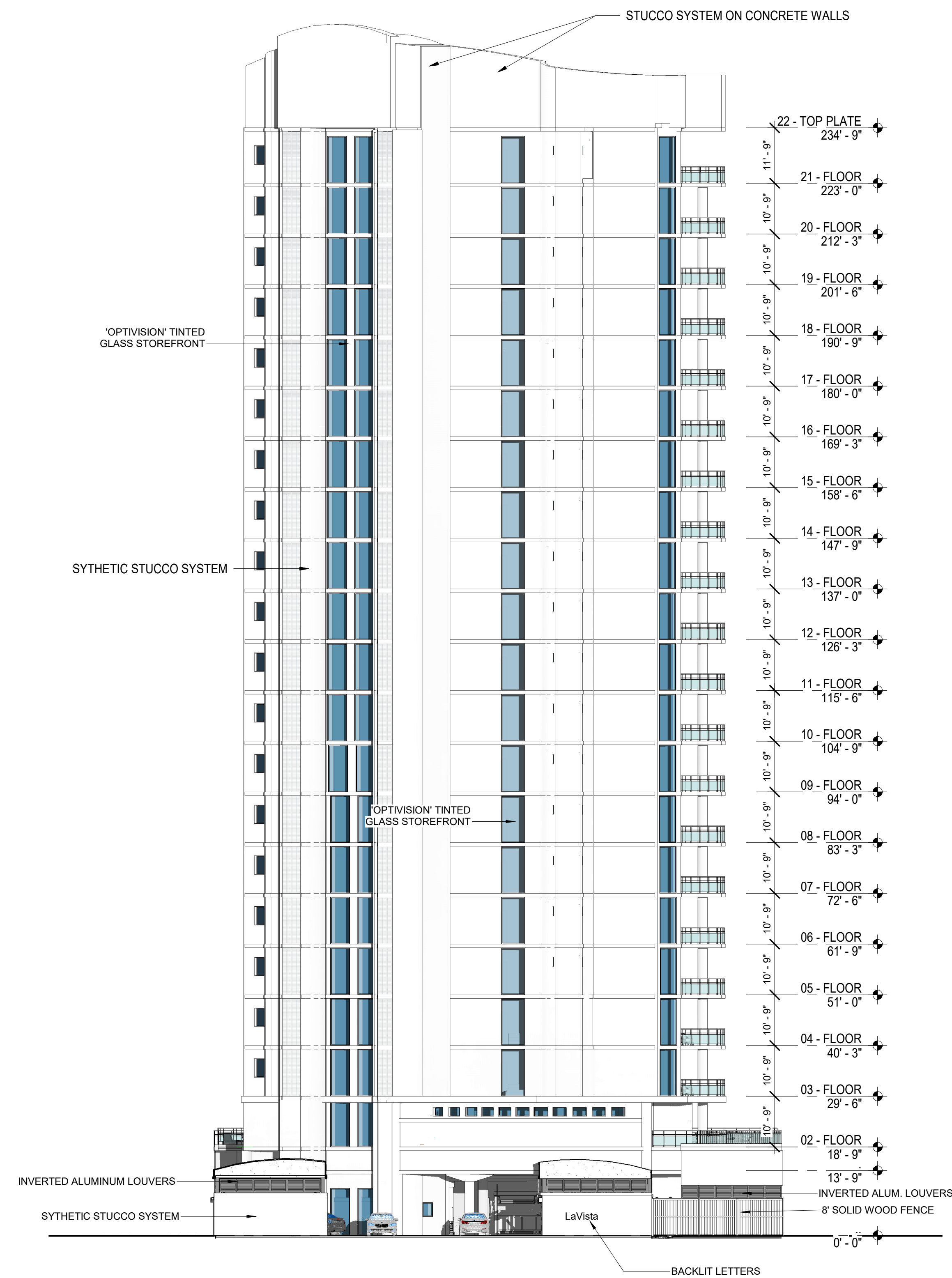
REVISIONS:

SHEET TITLE:
NORTH & WEST
ELEVATIONS

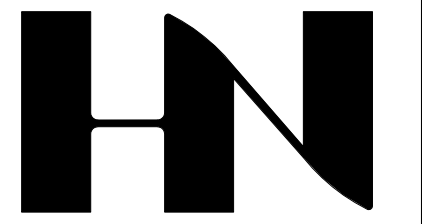
A201



WEST ELEVATION



NORTH ELEVATION



HENRY NORRIS & ASSOCIATES

ARCHITECTURE & ENVIRONMENTAL DESIGN

30 N. PALAFOX
PENSACOLA, FL
32502
(850)432-6011
FAX 435-9001

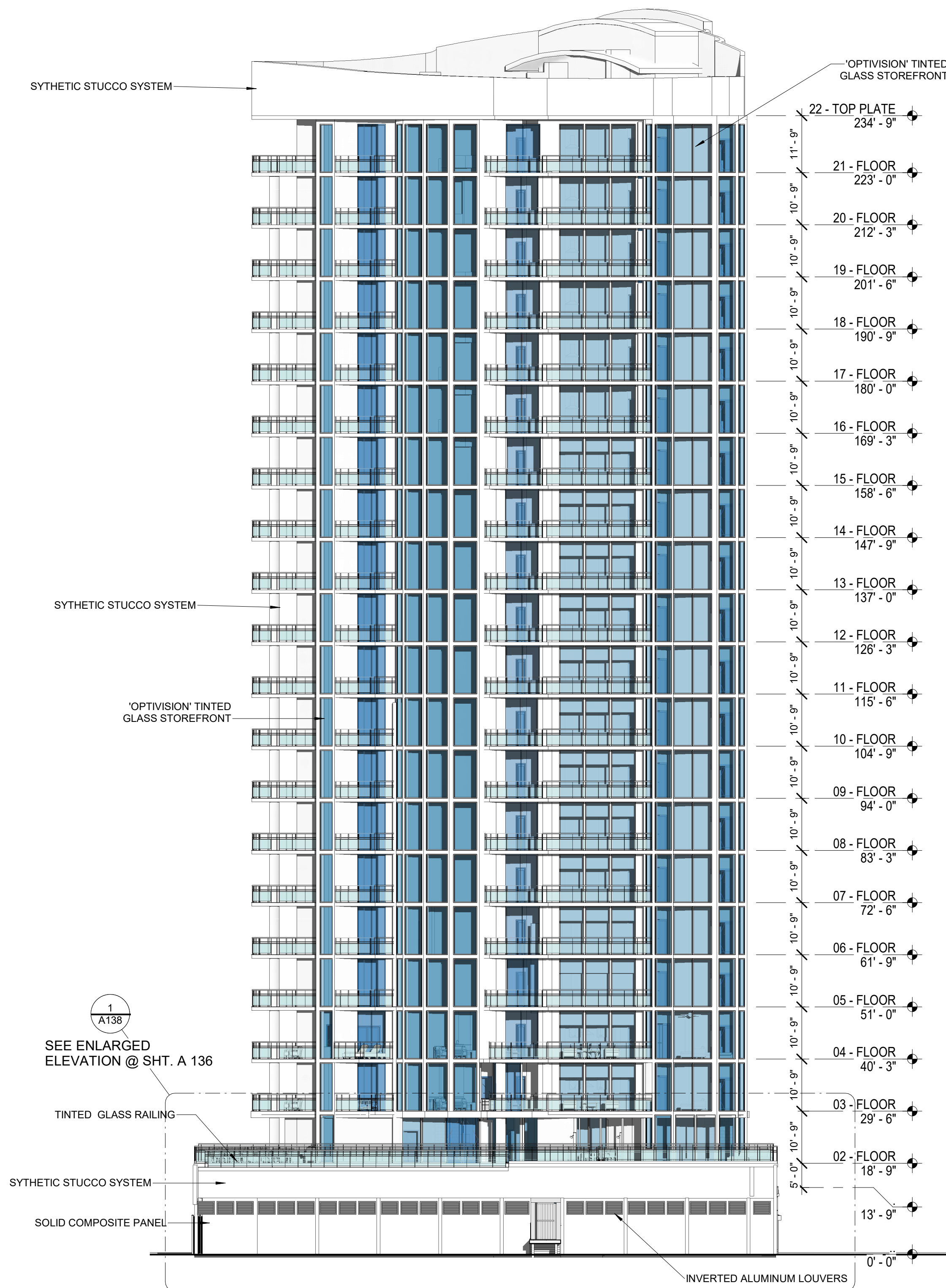
LAVISTA
PERDIDO KEY, FLORIDA

JOB #: Project Number
CAD:
CHECKED: HN
DATE: 7/27/24

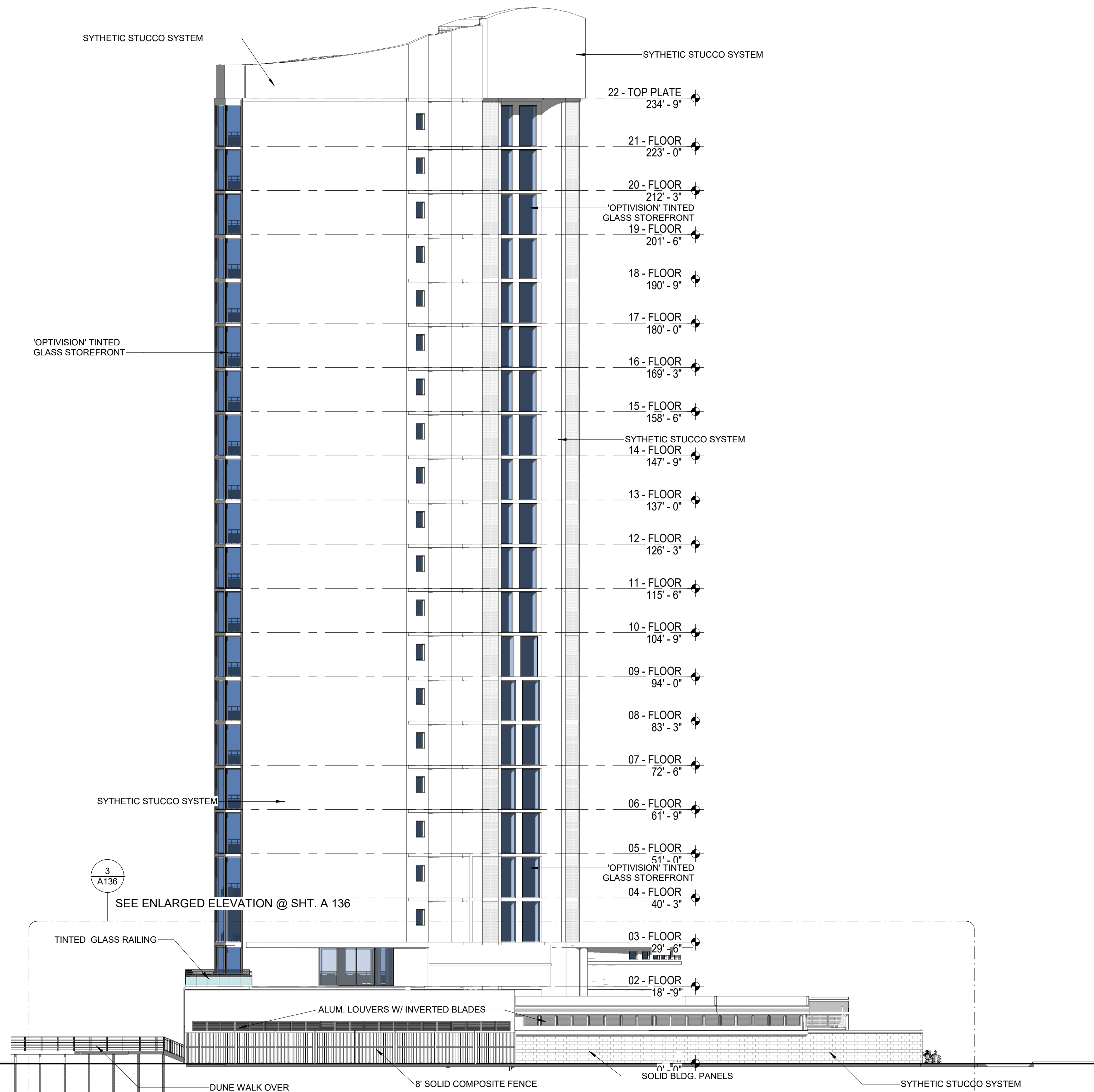
REVISIONS:

SHEET TITLE:
SOUTH & EAST
ELEVATIONS

A200



SOUTH ELEVATION



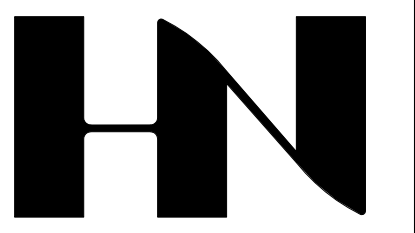
EAST ELEVATION



South West Building View



North East Building View



HENRY NORRIS
&
ASSOCIATES

ARCHITECTURE
&
ENVIRONMENTAL
DESIGN

30 N. PALAFOX
PENSACOLA, FL
32502
(850)432-6011
FAX 435-9001

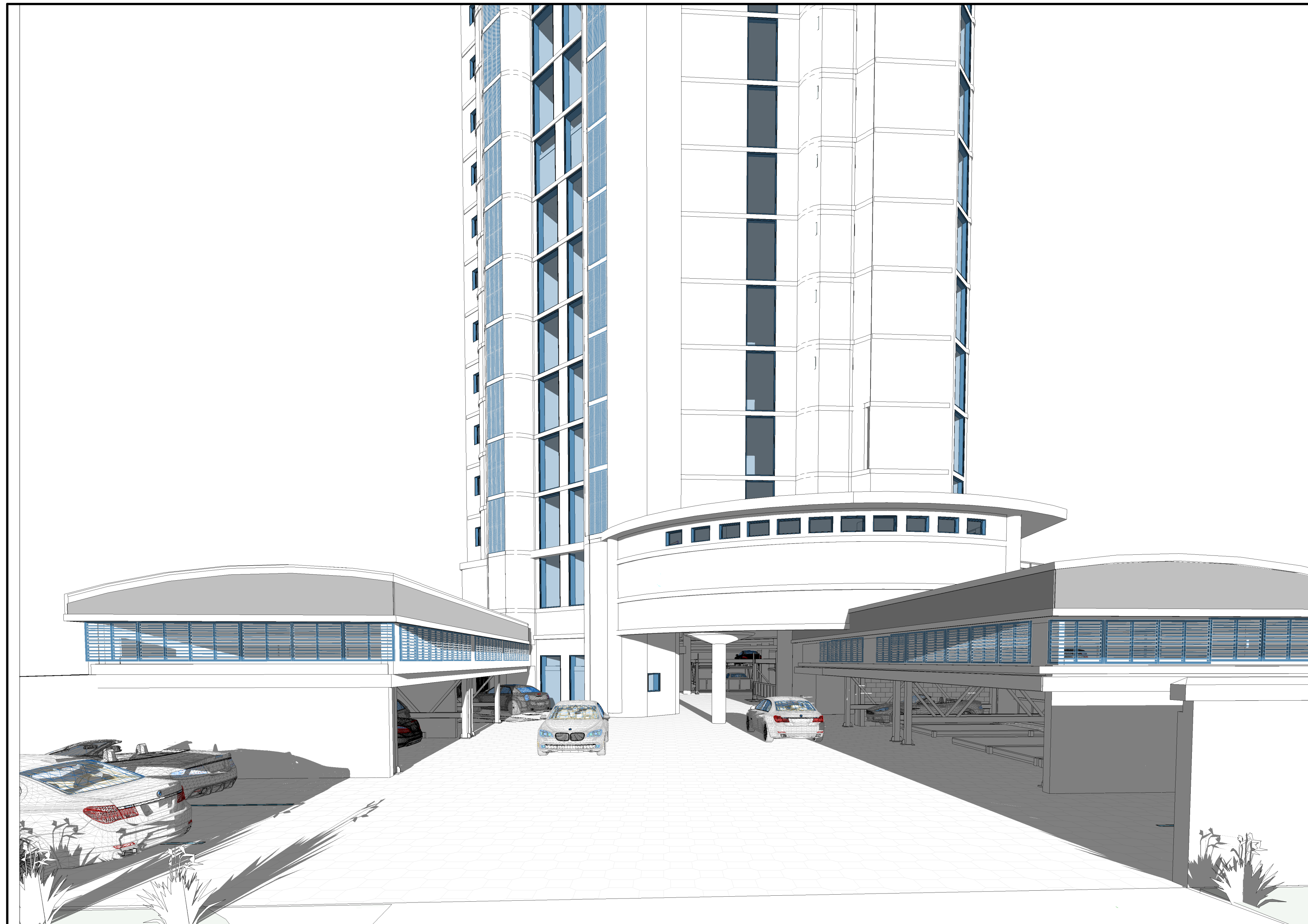
LAVISTA
PERDIDO KEY, FLORIDA

JOB #: Project Number
CAD:
CHECKED: HN
DATE: 7/27/24

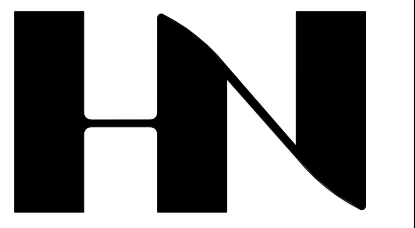
REVISIONS:

SHEET TITLE:
EXTERIOR
PERSPECTIVES

A901



Front Perspective View



HENRY NORRIS
&
ASSOCIATES

ARCHITECTURE
&
ENVIRONMENTAL
DESIGN

30 N. PALAFOX
PENSACOLA, FL
32502
(850)432-6011
FAX 435-9001

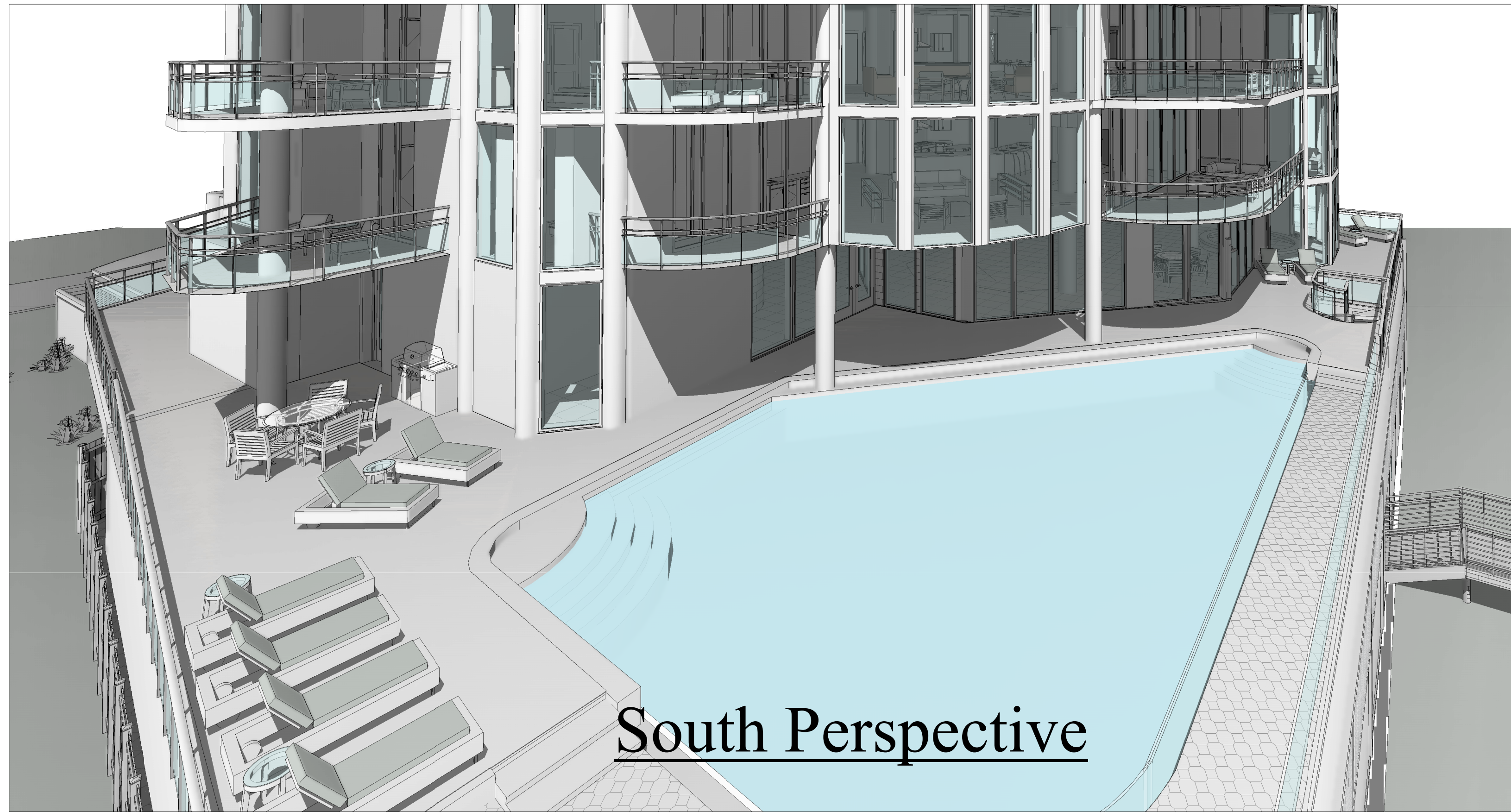
LAVISTA
PERDIDO KEY, FLORIDA

JOB #: Project Number
CAD:
CHECKED: HN
DATE: 7/27/24

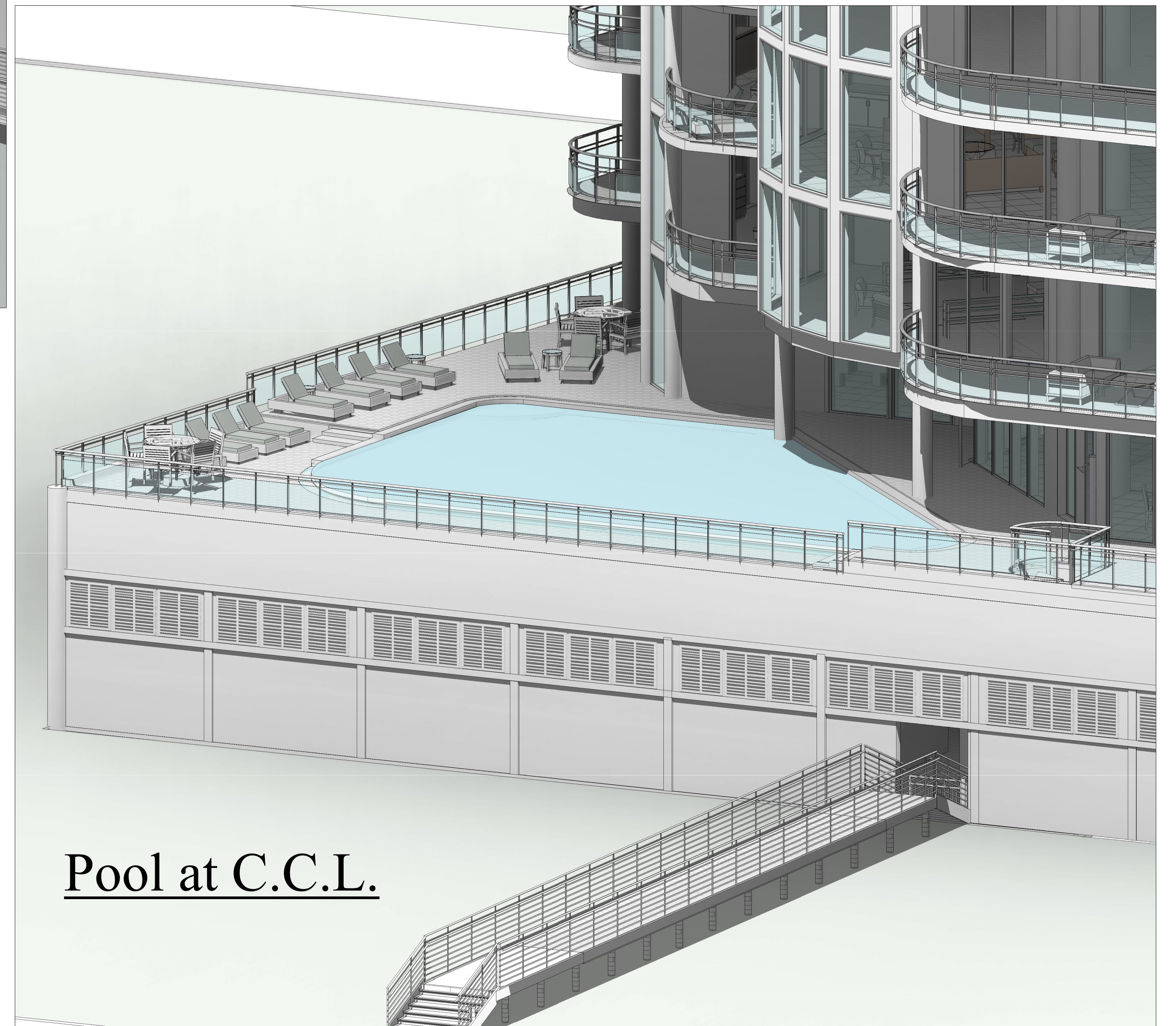
REVISIONS:

SHEET TITLE:
FRONT EXTERIOR
PERSPECTIVE

A901.a



South Perspective



Pool at C.C.L.